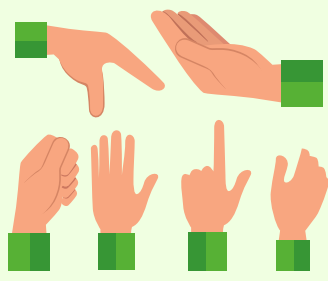




# SPECIAL EDUCATIONAL NEEDS (SEN) SERVICES

## SEN Support at HKBU

HKBU is committed to providing equal educational opportunities for all students including those with special educational needs, in support of the University's strategic aim to develop an inclusive, positive and respectful learning environment.



## One-stop Service

The Unit for Students with Special Educational Needs (USSEN) serves as the central coordinator to provide one-stop service to students with special educational needs.

## SEN Registration

Applicants are required to submit an application form, medical proof of disability, and a professional assessment report issued within five years.



## Confidentiality

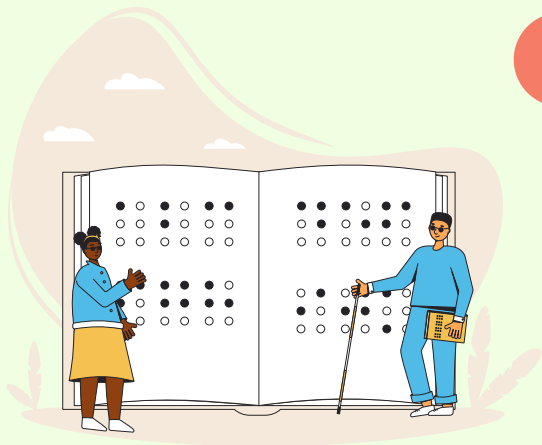
Disability or SEN declaration is voluntary. Your SEN information will not appear on your academic record. Confidential data obtained from a registered student is used for the purpose of service arrangements on a needed basis, except where required by law.

## HKBU Privacy Policy



# SEN Support

## 1 Learning Support



Special examination arrangements  
Reasonable academic adjustments  
Special Academic Advisors  
Special Library support  
Assistive aids & equipment

## 2 Campus Accessibility

Accessible toilets, entrances  
Barrier-free facilities  
Tactile guide paths  
Guide dog policy  
Web accessibility



## 3 Financial Schemes

SEN scholarships  
SEN funds  
SEN grants



## 4 Personal Development

Skills training  
Career consultation  
Counselling services



## 5 Peer Support

Note-taking  
Guide walking  
Socialization  
Campus orientation



## What is the best fit for me?

Formal assessments by qualified professionals can determine if a student has SEN and recommend the type of support and intervention needed.

## Unit for Students with Special Educational Needs



DLB704A, Shaw Campus, HKBU



<https://sa.hkbu.edu.hk/ussen>



(852) 3411 2806



[ussen@hkbu.edu.hk](mailto:ussen@hkbu.edu.hk)

More details...

